



**MUDON  
AL RANIM**

  
**DUBAI  
PROPERTIES**





CONTEMPORARY FACADES  
WITH AMPLE GREENERY







# MUDON

## LIFE IS BETTER TOGETHER

Mudon is one of the most sought-after communities in Dubai. Established in 2008, the community truly pioneered suburban living in the city. It was conceptualised keeping the family lifestyle at its core. It is where the streets have been planned for casual outdoor strolls. Where playgrounds evoke fun and activity. Where all the amenities are right at your doorstep. At Mudon, community life takes on a whole new meaning.









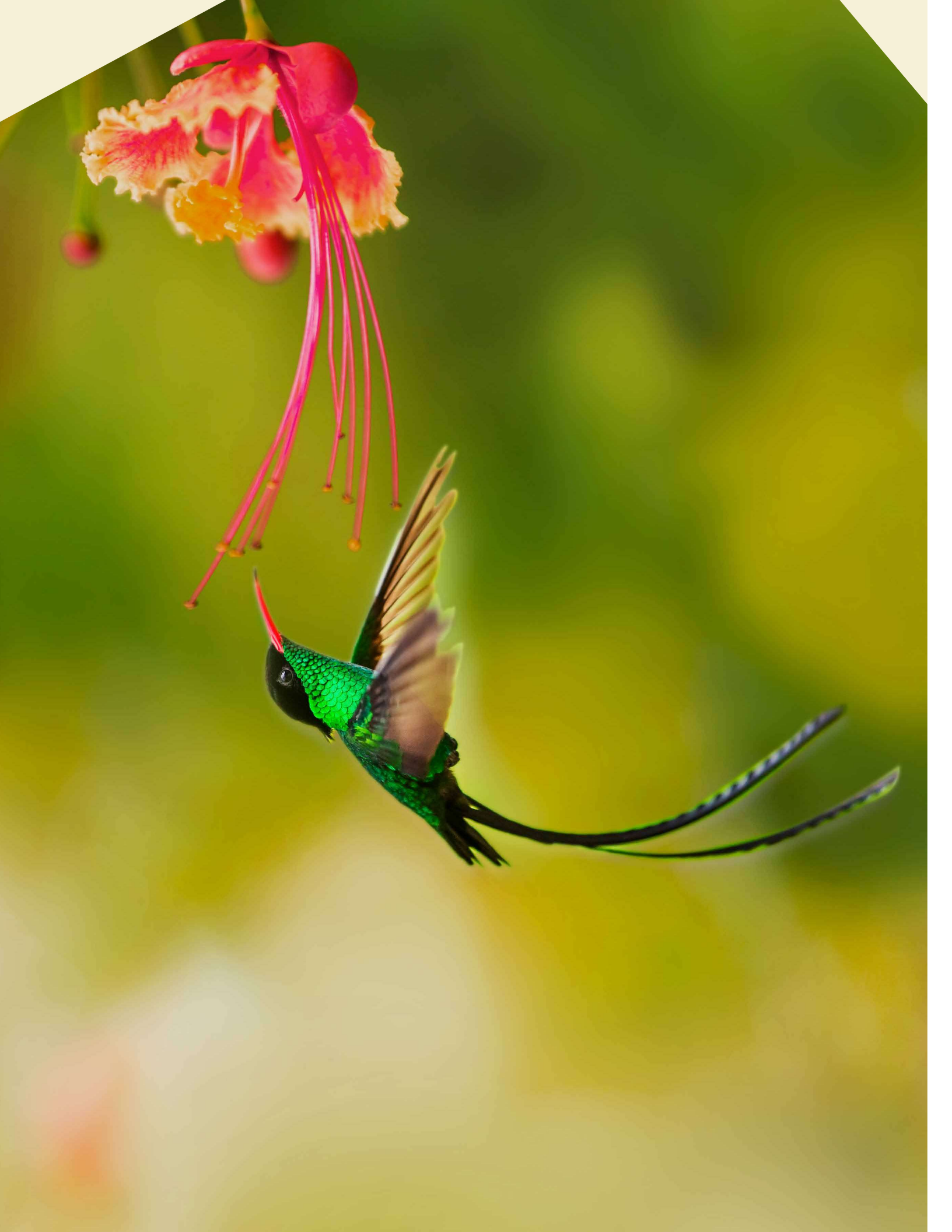


# MUDON AL RANIM WHAT'S YOUR STORY?

Very often we come across people who end up becoming lifelong friends. But before friendship plants its roots, we share moments and stories of how we got to where we are. Sometimes it's typical and sometimes it's simply something unbelievable. Whether it was a two-year plan that's going on ten, or whether it's a whirlwind of travel where you just happened to settle in Dubai, these tales are what build bonds between us. At

Mudon Al Ranim, always ask your neighbour... "What's your story?"

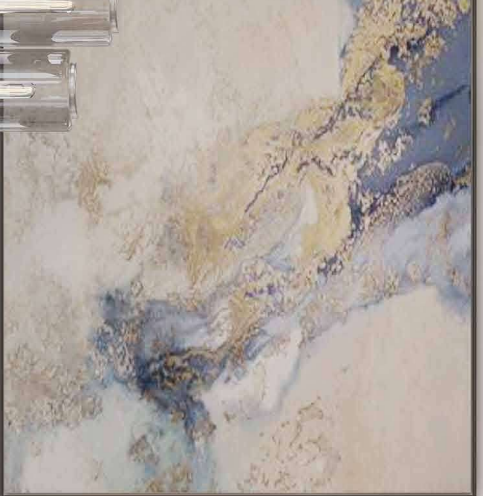
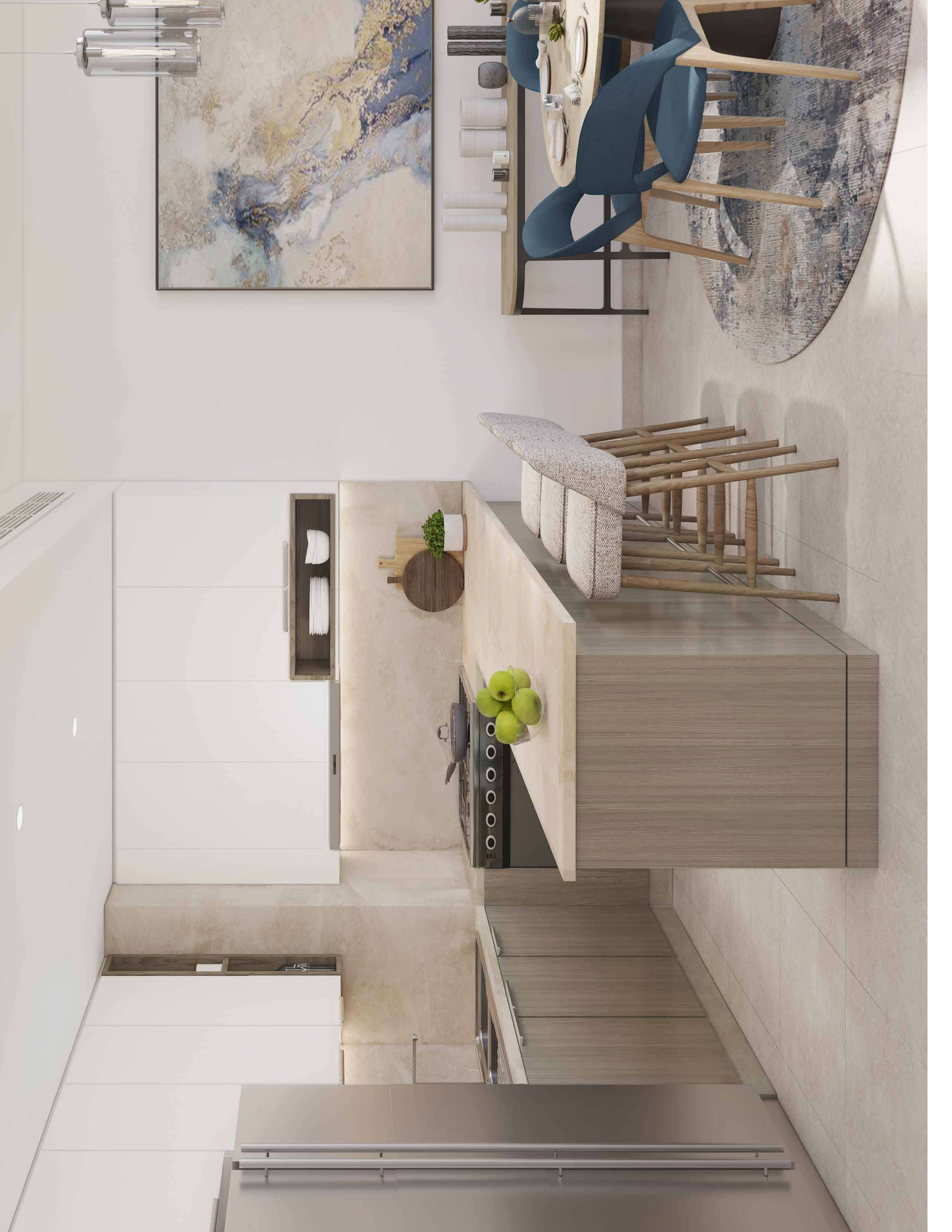






# DAZZLING INTERIORS WITH THE FINEST FINISHES

The fresh and classy exteriors are matched by modern and contemporary interiors. Utilising the finest materials, the finishing is meant to provide character and charm to the homes. Careful attention has also been put on maximising space to ensure that all areas are open and flowing.





Palm Jumeirah

Burj Al Arab



Ain Dubai



Sheikh Zayed Road

Ibn Battuta Mall



Mall of The Emirates



Al Khail Road

Dubai Hills Mall



Global Village



Sheikh Mohammed Bin Zayed Road

Emirates Road

Al Qudra Road

Hessa St.

Remraam

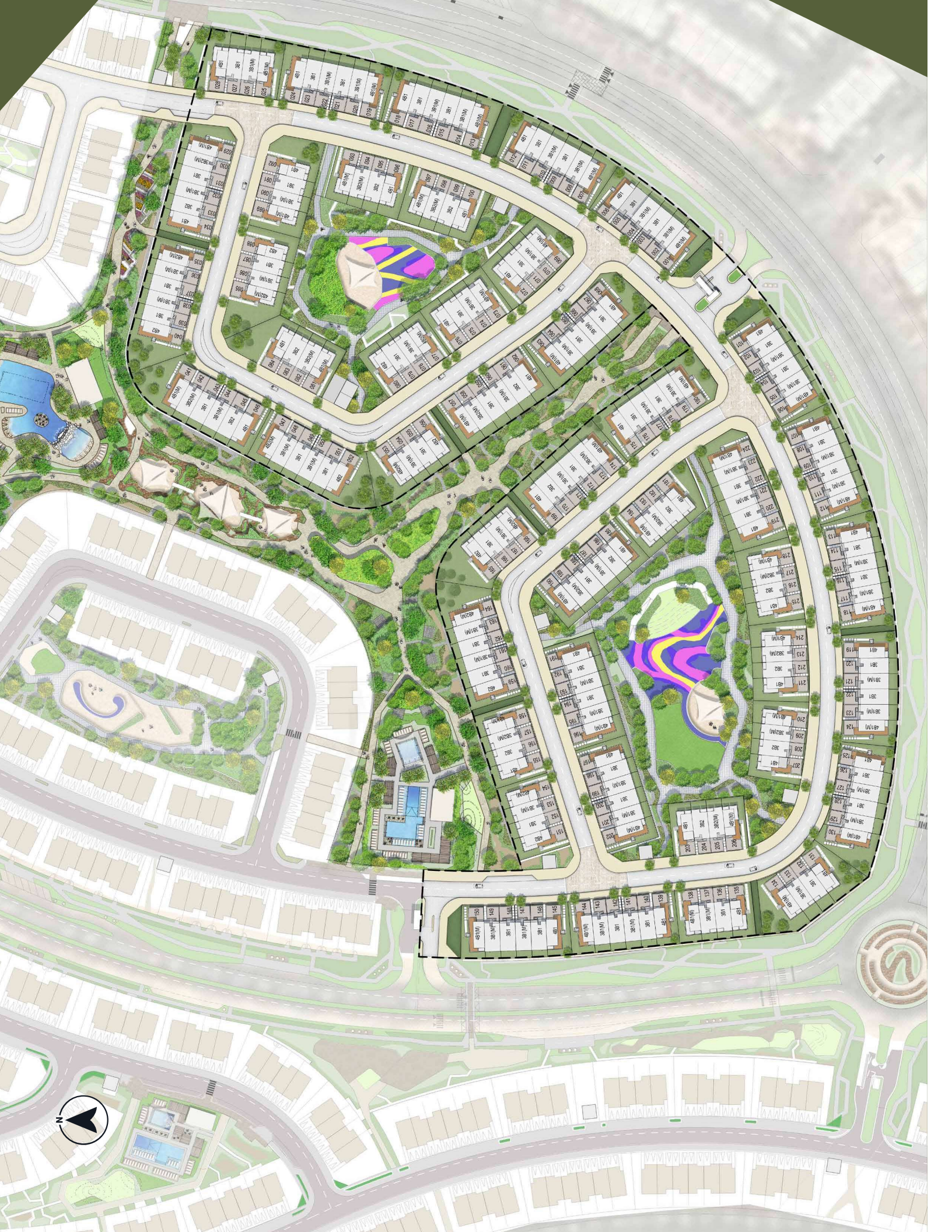


MUDON  
AL RANIM

# MUDON MASTER PLAN













# 3-BEDROOM TOWNHOUSE-TYPE 3B1

3-BEDROOM+MAID - MID UNIT

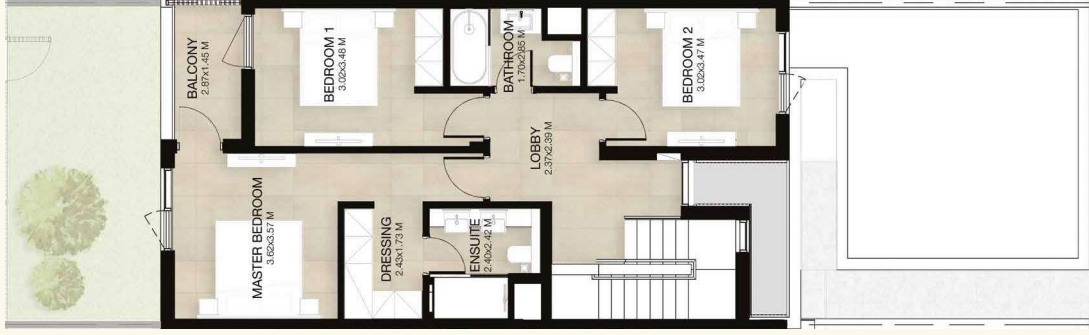
TOTAL AREA: 206 SQM / 2,217 SQFT

03 BEDROOMS



02

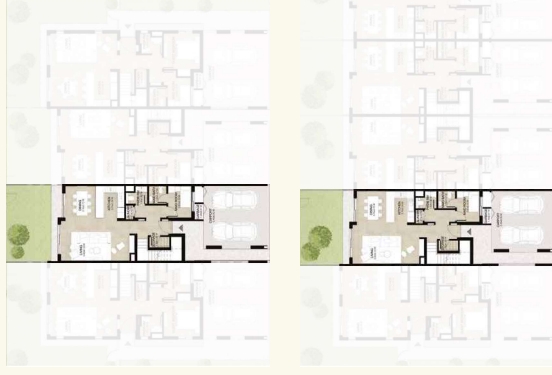
BATHROOMS



FIRST LEVEL



GROUND LEVEL



Note: Plan and details included are indicative only and are subject to change by the Master Developer/Seller at its sole discretion without notice and/or liability. All images, including features, finishes, furnishings and scale are illustrative only. Final areas, dimensions, layout and materials may differ from those stated, and the layout may be mirrored. The plot area shown is illustrative only and the actual plot area may vary depending on the plot location in the Master Community as selected by the purchaser.

# 3-BEDROOM + FAMILY TOWNHOUSE-TYPE 3B2

3-BEDROOM+FAMILY & MAID - MID UNIT

TOTAL AREA: 238.55 SQM / 2,568 SQFT

03 BEDROOMS



02

BATHROOMS



Note: Plan and details included are indicative only and are subject to change by the Master Developer/Seller at its sole discretion without notice and/or liability. All images, including features, finishes, furnishings and scale are illustrative only. Final areas, dimensions, layout and materials may differ from those stated, and the layout may be mirrored. The plot area shown is illustrative only and the actual plot area may vary depending on the plot location in the Master Community as selected by the purchaser.



# 4-BEDROOM TOWNHOUSE-TYPE 4B1

4-BEDROOM+MAID - END UNIT

TOTAL AREA: 236.78 SQM / 2,549 SQFT

04



BEDROOMS

03



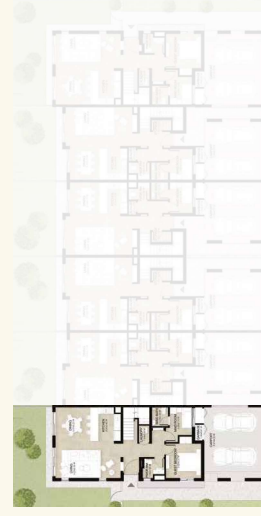
BATHROOMS



FIRST LEVEL



GROUND LEVEL



Note: Plan and details included are indicative only and are subject to change by the Master Developer/Seller at its sole discretion without notice and/or liability. All images, including features, finishes, furnishings and scale are illustrative only. Final areas, dimensions, layout and materials may differ from those stated, and the layout may be mirrored. The plot area shown is illustrative only and the actual plot area may vary depending on the plot location in the Master Community as selected by the purchaser.

# 4-BEDROOM + FAMILY TOWNHOUSE-TYPE 4B2

4-BEDROOM+FAMILY & MAID - END UNIT

TOTAL AREA: 276.70 SQM / 2,978 SQFT

04



BEDROOMS

03



BATHROOMS



ROOF LEVEL

FIRST LEVEL

GROUND LEVEL



Note: Plan and details included are indicative only and are subject to change by the Master Developer/Seller at its sole discretion without notice and/or liability. All images, including features, finishes, furnishings and scale are illustrative only. Final areas, dimensions, layout and materials may differ from those stated, and the layout may be mirrored. The plot area shown is illustrative only and the actual plot area may vary depending on the plot location in the Master Community as selected by the purchaser.

Note: Plan And Details Included Are Indicative Only And Are Subject To Change By The Master Developer/Seller At Its Sole Discretion Without Notice And/Or Liability. All Images, Including Features, Finishes, Furnishings And Scale Are Illustrative Only. Final Areas, Dimensions, Layout And Materials May Differ From Those Stated, And The Layout May Be Mirrored. The Plot Area Shown Is Illustrative Only And The Actual Plot Area May Vary Depending On The Plot Location In The Master Community As Selected By The Purchaser.





 **DUBAI**  
PROPERTIES

